



Processing
Sweet Corn
2023

Bred by Snowy River Seeds...

From Australia, Snowy River breeds, produces and markets hybrid sweet corn seed to all markets of the world.

The Snowy River brand is synonymous and widely recognised for quality and service and is one of the leading suppliers of sweet corn genetics. Snowy River offers the full range of Supersweet (Shrunken sh2) in yellow, bicolour and white, and Sugary (Normal su1) in yellow.

Comprehensive breeding and testing programs are carried out in Australia (Temperate, Sub Tropical and Tropical), New Zealand, USA, France, Hungary, China, South Africa and South America. The breeding is focused on creating hybrids which are reliably profitable for the grower, whether it be for processing or the fresh market.



Breeder Damien Courtier and Director Leo Schoots, Snowy River Seeds.

snowyriverseeds.com

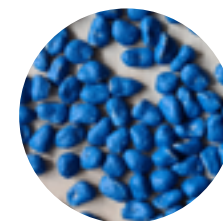


...marketed by Strube

In a time of scarce resources, rapid technological advancement and increasing ethical and economical requirements, we believe that our plant breeding makes a significant contribution to ensuring the global food supply.

We are a globally active company characterised by innovation, high standards in research and development and comprehensive quality awareness. As plant breeders, we supply farmers and the processing industry with quality seeds, varieties adapted to the respective region and sustainable cultivation solutions. Our products are known for their high return, stability and quality.

The sweet corn acreage for the production of fresh cobs is growing in Europe. With our portfolio, we are able to offer specific products for that segment.



We aim to offer solutions to processors and farmers. Because we know that it can be difficult to establish a well-developed, uniform field stand with the appropriate plant density, we as seed experts have developed a seed coating that will help the plant in its youth development.

Pelleted sweet corn has the ideal shape and weight for an easy and accurate planting. Please visit our website for further information.



strube.net





Sugary Yellow

	Variety	Jet	ZUY1367ID	Cash	Prelude	ZUY1355IA	ZUY74690Y (Imperator)	ZUY1357IA	Enterprise
Cycle	Growing Days	69	70	76	79	80	82	84	85
Ear Data	Cob Length (cm)	19	21	19	19	20	20	21	21
	Cob Width (cm)	5,1	5	5,5	5,4	5,4	5,5	5,4	5,5
	Row Number	14-16	14-16	20-22	16-18	18-20	18-20	18-20	18-20
Plant Description	Plant Height (Low, Medium, Tall)	L	L	M	M	M	M	M	T
	Cob Height (Low, Medium, Tall)	L	L	M	M	M	M	M	M
Diseases Resistance	Rust Common (Ps) Rp1 d	HR	IR	IR	IR	HR	HR	HR	HR
	Rust Common (Ps) Other	IR	IR	IR	IR	IR	HR	HR	IR
	Northern Corn Leaf Blight = NCLB (Et)	SU	IR	SU	SU	IR	IR	HR	HR
	Stewarts Wilt (Pst)	IR	IR	IR	IR	*	*	*	HR
	Maize Dwarf Mosaic Virus (MDMV)	SU	SU	SU	SU	HR	HR	HR	HR
	Southern Leaf Blight	SU	*	IR	IR	*	*	*	HR
	Gosses Wilt	IR	*	*	IR	*	*	*	IR

ZUY1367ID

- Early and strong, with great emergence. It allows to get an early jump on your processing season.
- Good husk protection and great flags for husking.
- Large yield potential, suitable for early sowings and late as a catch up crop.

Cash

- Good early vigour. Plant from early to mid-season.
- Wide harvest window and high recovery is frequently reported.
- Attractive cob shape, wide cob, deep kernel, with excellent tip fill.

ZUY1355IA

- Plant can be grown throughout the whole season, with exceptionally good results when planted mid-early and in the main season.
- Robust and resilient plant, easy to grow, with excellent tolerance to MDMV.
- Wide cob, well protected by long husk, easy to process for factories.

ZUY74690Y (Imperator)

- Main season variety can be planted throughout the whole campaign. Easy to grow.
- Healthy plant. Well adapted to many different environments, including the ones with high MDMV pressure.
- Bred for processors, giving high recoveries in factories.

ZUY1357IA

- High yield and recovery potential. Excellent disease resistance including rust, NCLB and MDMV.
- Medium-high plant, which can be grown from mid to late season.
- Long holding capacity will improve recovery and yields.

Enterprise

- Widely adapted variety with excellent disease resistance. Suitable for whole campaign.
- Cans and freezes well. Excellent colour. Maintains quality even when harvested late.
- Tall plant with strong stem. Medium to long cylindric cob that processes well.

Chemical tolerance is based on findings by the Dept of Crop Sciences Uni of Illinois USA where Tol = a rating between no or limited injury from the applications of the herbicide. Tolerance is defined as the ability of a plant variety to endure abiotic stress without serious consequences for growth, appearances or yield. A tolerant plant will usually show fewer symptoms than plants when grown under similar conditions of abiotic stress.
Disease ratings are as defined by ISF Position Paper May 2005 refer to: www.worldseed.org for more information.

HR: High/Standard Resistance: Describes plant varieties that restrict the growth and development of the specified pest or pathogen under normal pressure when compared to susceptible varieties. HR varieties may exhibit some symptoms or damage under heavy pest or pathogen pressure.
IR: Intermediate/Moderate Resistance: Describes plant varieties that restrict the growth and development of the specified pest or pathogen, but may exhibit a greater range of symptoms or damage compared to HR varieties. IR varieties will still show less

severe symptoms or damage than susceptible plant varieties when grown under similar environmental conditions and/or pest or pathogen pressure.
SU: Susceptibility is the inability of a variety to restrict the growth and development of a specified pest or pathogen.
Notes regarding Rust strains: Common rust races identified in 2001 in USA were not controlled by any of the single genes Rp1-d, Rp1-e, Rp1-g, or Rp1-i.
The effectiveness of rust genes in sweet corn will be determined by the variation of common rust races in each growing area.

* means we have insufficient data
The information contained herein is intended as a guide only. Data is based on averages collected from around the world and are indicative only. Varieties should always be trialed in the area they are proposed to be grown. Varietal performance is influenced by many variables, including soil and climatic conditions, cultural and management practices. No liability will be accepted by Snowy River Seeds or its representatives for the accuracy of this information.



Supersweet Yellow

	Variety	ZHY5022OD	ZHY1797ID	ZHY1253OZ	ZHY3278OY (Impress)	ZHY6467OA	ZHY1455CY	ZHY1312OR	ZHY1794AC	Overture	ZHY1478FA (Forerunner)
Cycle	Growing Days	72	74	81	82	83	83	84	85	86	87
Ear Data	Cob Length (cm)	22	21	21	21	19	22	19	22	20	20,5
	Cob Width (cm)	5,3	5,3	5,1	5,6	5,2	5,4	5,6	5,3	5,4	5,3
	Row Number	14-16	14-16	16-18	20-22	14-16	18-20	18-20	18-20	18-20	18-20
Plant Description	Plant Height (Low, Medium, Tall)	M	M	M	T	M	M	M	M	M	M
	Cob Height (Low, Medium, Tall)	M	M	M	M	M	M	M	M	M	M
Diseases Resistance	Rust Common (Ps) Rp1 d	IR	IR	HR	IR	HR	HR	IR	HR	IR	IR
	Rust Common (Ps) Other	IR	IR	HR	IR	HR	HR	IR	HR	IR	IR
	Northern Corn Leaf Blight = NCLB (Et)	IR	IR	IR	IR	IR	IR	HR	IR	HR	IR
	Stewarts Wilt (Pst)	IR	IR	*	*	*	*	*	*	IR	*
	Maize Dwarf Mosaic Virus (MDMV)	SU	IR	SU	HR	HR	SU	SU	IR	SU	HR
	Southern Leaf Blight	*	*	*	*	*	*	IR	*	IR	*
	Gosses Wilt	*	*	*	*	*	*	*	*	IR	*

ZHY5022OD

- First early variety, due to its fast initial growth under cold conditions.
- Large, well-filled ear. Very homogeneous dark yellow colour and straight lines make it a good choice for processors and fresh market.
- Easy to harvest and to process in the factories, offering large recoveries.

ZHY1797ID

- Strong early vigour, strong stocky plant, ideal for early sowings.
- Large yield capacity, able to yield in the field and in the factory.
- Strong tip fill and nice rowing make the variety attractive for the fresh market.

ZHY1253OZ

- Variety well adapted for many regions and sowing periods, from second early to late plantings. Avoid high MDMV pressure.
- Rustic plant, with a long cob, nice shape and deep yellow colour, suitable for all uses.
- 16-18 rows of deep kernels, will yield in the fields and push the recovery up in the factories.

ZHY3278OY (Impress)

- All season medium maturity variety with good disease resistance, including MDMV.
- Strong plant with good ear length, tip fill and excellent husk coverage against birds.
- Uniform kernel colour. Excellent holding capacity that drives yield and recovery up.

ZHY1794AC

- Full season long cycle variety with a wide adaptation including areas with MDMV pressure.
- Strong plant with great yield performance and wide harvest window.
- High quality corn, small deep kernels that look excellent both canned and frozen.

ZHY1478FA (Forerunner)

- Full season variety with strong plants, robust roots and excellent lodging resistance.
- Resilient variety. Good tolerance to the more common diseases in Europe, including MDMV.
- Strong husk cover gives ideal protection against insect and bird damages.

Chemical tolerance is based on findings by the Dept of Crop Sciences Uni of Illinois USA where Tol = a rating between no or limited injury from the applications of the herbicide. Tolerance is defined as the ability of a plant variety to endure abiotic stress without serious consequences for growth, appearances or yield. A tolerant plant will usually show fewer symptoms than plants when grown under similar conditions of abiotic stress.

Disease ratings are as defined by ISF Position Paper May 2005 refer to: www.worldseed.org for more information.

HR: High/Standard Resistance: Describes plant varieties that restrict the growth and development of the specified pest or pathogen under normal pressure when compared to susceptible varieties. HR varieties may exhibit some symptoms or damage under heavy pest or pathogen pressure.

IR: Intermediate/Moderate Resistance: Describes plant varieties that restrict the growth and development of the specified pest or pathogen, but may exhibit a greater range of symptoms or damage compared to HR varieties. IR varieties will still show less

severe symptoms or damage than susceptible plant varieties when grown under similar environmental conditions and/or pest or pathogen pressure.

SU: Susceptibility is the inability of a variety to restrict the growth and development of a specified pest or pathogen.

Notes regarding Rust strains: Common rust races identified in 2001 in USA were not controlled by any of the single genes Rp1-d, Rp1-e, Rp1-g, or Rp1-i. The effectiveness of rust genes in sweet corn will be determined by the variation of common rust races in each growing area.

* means we have insufficient data

The information contained herein is intended as a guide only. Data is based on averages collected from around the world and are indicative only. Varieties should always be trialed in the area they are proposed to be grown. Varietal performance is influenced by many variables, including soil and climatic conditions, cultural and management practices. No liability will be accepted by Snowy River Seeds or its representatives for the accuracy of this information.

Service and consultation

Customer Service

customer-service@strube.net



Lars Andersen
Global Vegetable
Crop Lead
T +45 216 825 21
l.andersen@strube.net



Santiago Elena
Product Evaluator
Vegetable
T +34 667 000 147
s.elena@strube.es

North France & Benelux



Jean-Marc Liron
Commercial Manager
Vegetable
T +33 06 77 07 54 91
jm.liron@strube.net



Germany



Hildegard Jacobi
Head of Production
Vegetable
T +49 5354 809 963
h.jacobi@strube.net



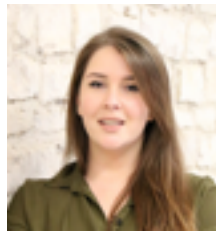
Katja Matschiner
Quality Management
and Supply
T +49 5354 809 950
k.matschiner@strube.net



Spain & Portugal



Max Schnalke
Production and Sales
Assistant
T +49 5354 809 981
m.schnalke@strube.net



Nikolina Seipelt
Production and Sales
Assistant
T +49 5354 809 981
n.seipelt@strube.net



Jaime Villamar
Sales Representative
Spain and Portugal
M +34 666 53 69 02
j.villamar@strube.es



Southwest France & Brittany



Jean-Charles Orhan
Sales Representative
France
M +33 6 15 25 29 29
j.orhan@strube.net



Italy



Arpino Simoni
Sales Representative
Italy
M +39 335 283 491
a.simoni@strube.net



Slovakia & Czech Rep.



Nika Briedikova
Sales Representative
Slovakia and Czech Rep.
M +421 903 24 58 89
n.briedikova@strube.sk



Serbia & Croatia



Ilija Beara
Sales Representative
Serbia and Croatia
M +381 21 552034
i.beara@strube.rs



Morocco



Nouredine Mesfioui
Sales Representative
Morocco
M +212 6 61 14 34 55
n.mesfioui@strube.net



Hungary



Zoltan Markocsány
Sales Representative
Hungary
M +36 30 685 56 92
z.markocsany@strube.net



Poland



Tomasz Banaszek
Sales Representative
Poland
M +48 600 07 33 96
t.banaszek@strube.pl



Ukraine



Kateryna Huz
Sales Representative
Ukraine
M +380 50 019 67 63
k.huz@strube.net



Russia



Aleksey Pekshev
Sales Representative
Russia
M +7 915 347 95 66
a.pekshev@strube.ru



Strube D&S GmbH
Hauptstraße 1
38387 Söllingen
Germany
T +49 5354 809 930
F +49 5354 809 937
info@strube.net
strube.net